

3900 Central Parkway
Hudsonville, MI 49426
toll free 800.338.7337
office 616.896.7100

techsupport@soundoffsignal.com
www.soundoffsignal.com

WARNING: Warning devices are strictly regulated and governed by Federal, State and Municipal ordinances. These devices shall be used ONLY on approved vehicles. It is the sole responsibility of the user of these devices to ensure compliance.

FORD POLICE INTERCEPTOR PLUG-IN Flasher Installation Instructions

Operating Specifications:

10-16 Vdc Input
Short Circuit Protection
Reverse polarity protected with 10amp in-line Mini ATO Fuse
Thermally protected - automatically shuts down if unit over heats
Output: 55 Watt Load on each of 2 outputs
High Beam Override, disables flasher when high beams are activated
Night Time Cutoff, disables flasher when low beams are activated if required by local regulations
Less than 10mA standby current
Fuse: Mini ATO 10 Amp

Mounting Instructions:

1. Remove radiator shroud by removing the 3 retaining screws.
2. Place flasher onto the cross brace locating the shroud mounting hole at the centerline of the large round hole in the bracket (See Detail).
3. Using the shroud as a positioning template, locate the flasher to the boss on the back side of the shroud.
4. Temporarily place the shroud and flasher onto the cross brace in the vehicle to locate the proper installation location for the flasher.
5. Remove the shroud being careful not to move the flasher and mark the cross brace for the location of the flasher.
6. Remove the flasher. Remove the seal on the adhesive and attach the flasher to the cross brace using the marks made in Step #5 to ensure proper location.
7. Press firmly on the flasher to ensure a solid adhesion to the cross brace.

2006 FORD POLICE INTERCEPTOR PLUG-IN FLASHER

ETHIFP0-06+

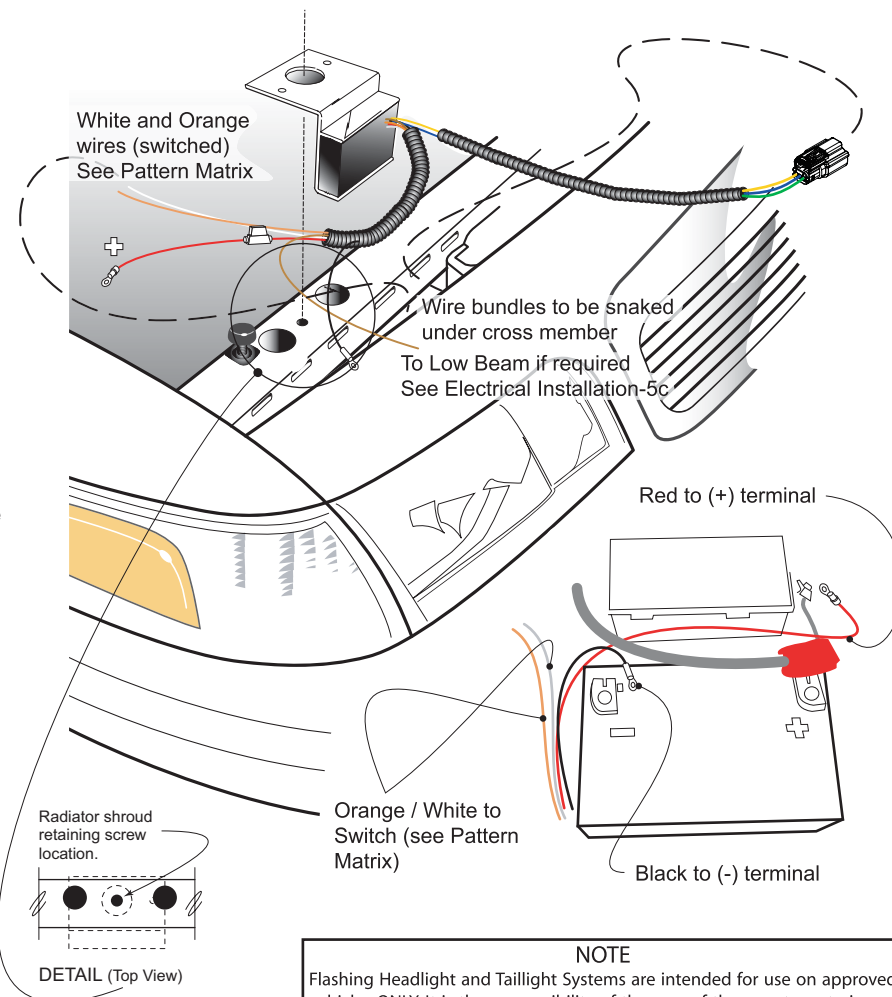
ELECTRICAL INSTALLATION INSTRUCTIONS

1. Locate the 3 pin connector in front of the radiator under the cross brace.
2. Remove the loop connector and store for future use if flasher is ever removed from vehicle.
3. Carefully route the 3 wire harness (Yellow, Green and Blue wires) with connector to the vehicle's mating connector making sure the harness will not interfere with moving vehicle components and will not get damaged in field operation. Connect flasher with mating vehicle connector.
4. Carefully rout the 5 wire harness (Red, Black, Orange, White, Brown) behind the headlight and around the battery, making sure the harness will not interfere with moving vehicle components and will not get damaged in field operation.
5. Wire Connections:
 - a. Black - Connect to a reliable ground, preferably to ground terminal of battery.
 - b. Red - Connect to power distribution post as shown at right. **IMPORTANT:** Do Not remove Mini ATO fuse holder as this provides protection in the event of a failure or short circuit.
 - c. Brown - Night Time Cutoff. If not required, cut and tape end with electrical tape. If required, "T" or tap into the vehicle's low beam headlight wire.
 - d. White and Orange - See Matrix below.

FLASH PATTERN MATRIX		
Flash Pattern	Orange Wire	White Wire
OFF	0	0
PowerPulse™	0	+10-16 Volts
RoadRunner™	+10-16 Volts	0
Q-Switch™	+10-16 Volts	+10-16 Volts

FINISHING THE INSTALLATION:

1. Test vehicle operation:
 - a. Turn flasher ON by supplying power to the Orange and/or White wires to ensure correct flash pattern is selected.
 - b. While flasher is ON, activate high beam headlight switch and verify flasher is disabled and high beams are both on.
 - c. If Night Time Cutoff is required, activate low beam headlight switch and verify low beams are ON, then turn flasher ON, and verify flasher does not operate.
2. Replace radiator shroud and secure with the 3 retaining screw pins that came with the vehicle.



Radiator shroud retaining screw location.
DETAIL (Top View)

NOTE
Flashing Headlight and Taillight Systems are intended for use on approved vehicles ONLY. It is the responsibility of the user of these systems to insure compliance to any Federal, State or Municipal regulations which may apply.

NO HASSLE WARRANTY

SoundOff Signal warrants the Headlight Flasher System for five (5) full years from the date of purchase to the original purchaser against any manufacturing defects or workmanship. This warranty applies only to units installed according to the manufacturer's installation instructions and operated within the unit's specifications.

Warranty is void if the unit was installed incorrectly or maliciously damaged.

All warranty claims must be accompanied by a dated proof of purchase.

SoundOff Signal retains the right to be the sole mediator of what constitutes defects in performance or manufacturing.